



DIPLOMA IN AUTOMOBILE ENGINEERING

CENTRALIZED QUESTION BANK

1021234540 - AUTOMOBILE COMPONENT DESIGN

**DIRECTORATE OF TECHNICAL
EDUCATION GOVERNMENT OF
TAMILNADU**

DIPLOMA END SEMESTER / YEAR EXAMINATION – 2025

Course: Automobile Engineering

Subject : Automobile Component Design

QP Code : 1021234540

Time : 3 Hours

Date :

Session:

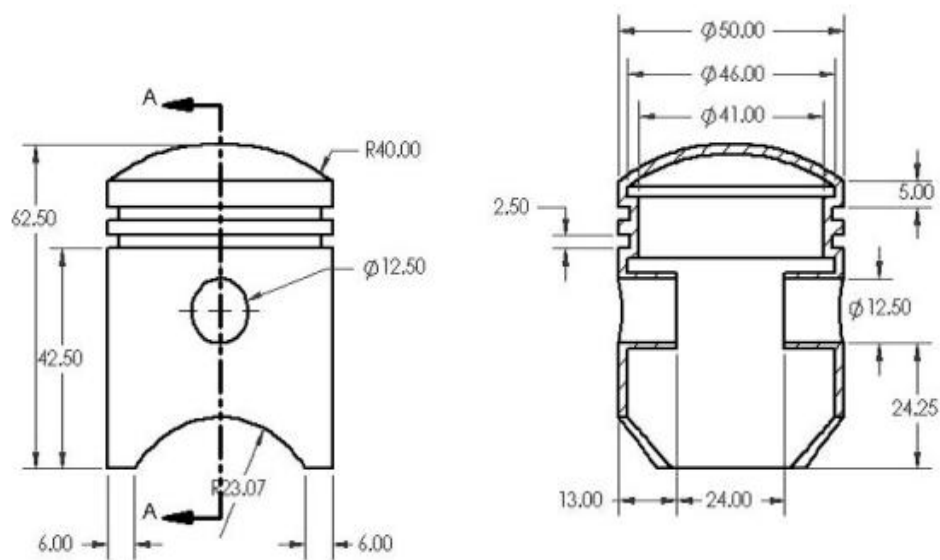
Max Marks:100

Note: Select any one exercise by lot or question paper supplied by the DOTE Exam section shall be used.

Answer the following Questions

1. Modelling of piston assembly

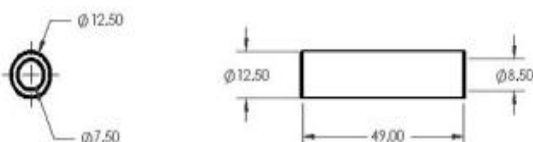
PISTON ASSEMBLY



FRONT VIEW

SECTION VIEW

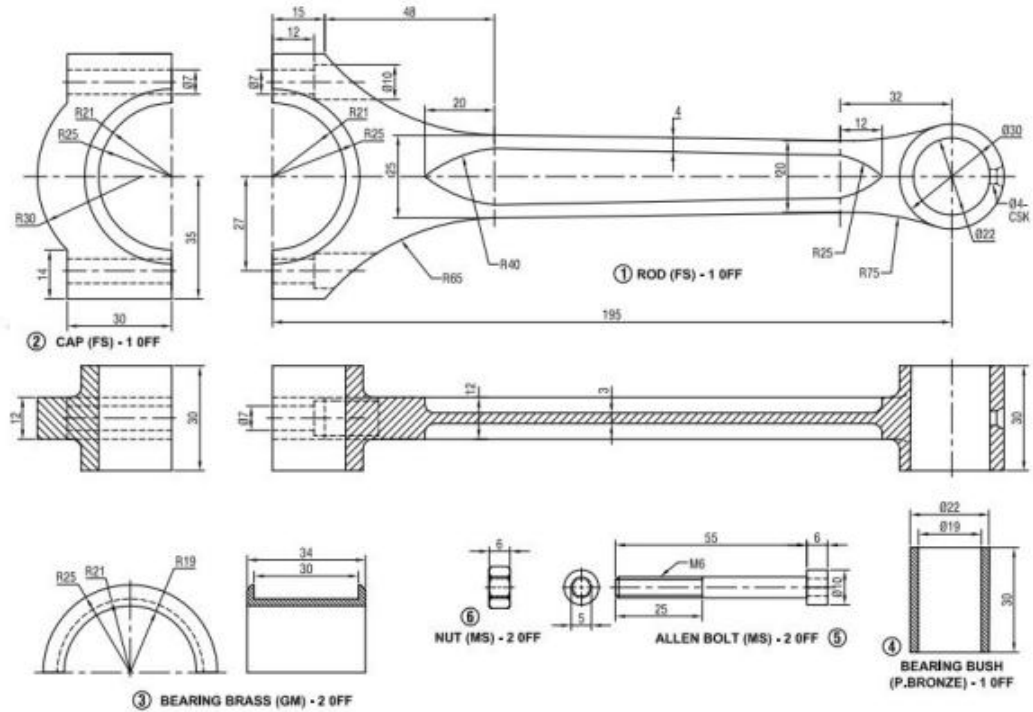
PISTON PIN



MISSING DIMENSIONS ARE ASSUMED

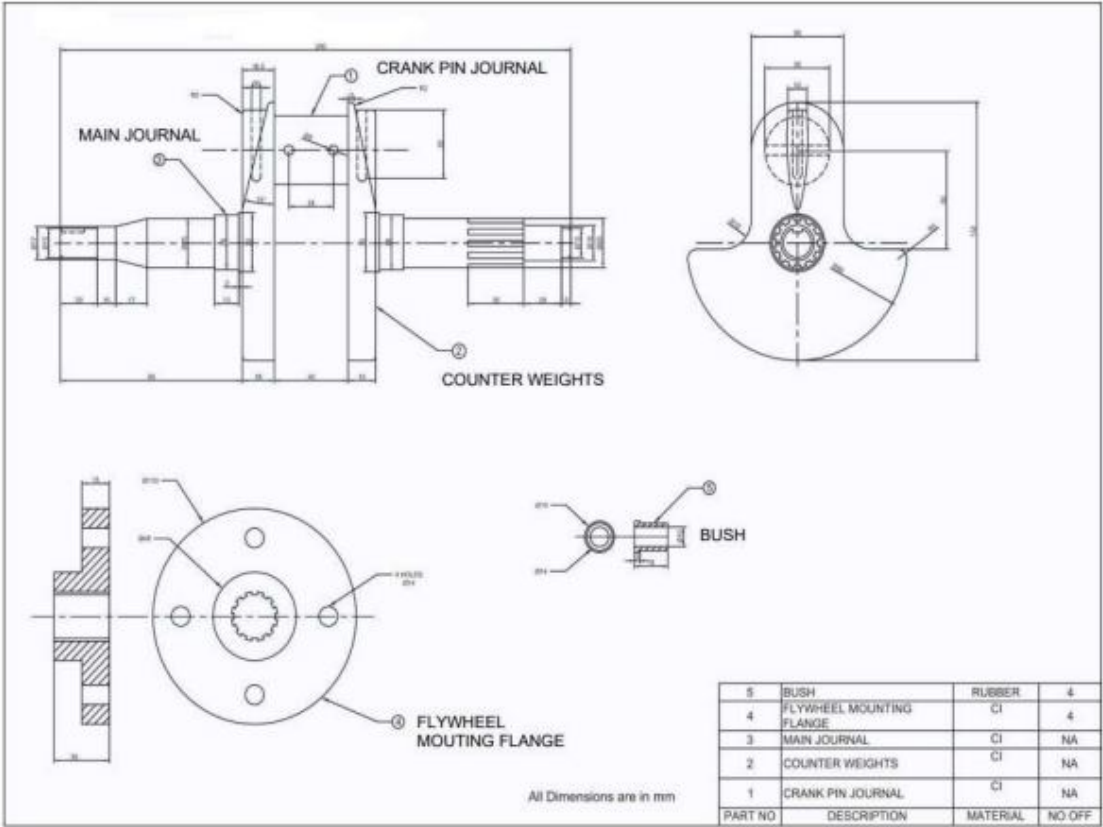
2. Modelling of the connecting rod assembly

CONNECTING ROD ASSEMBLY

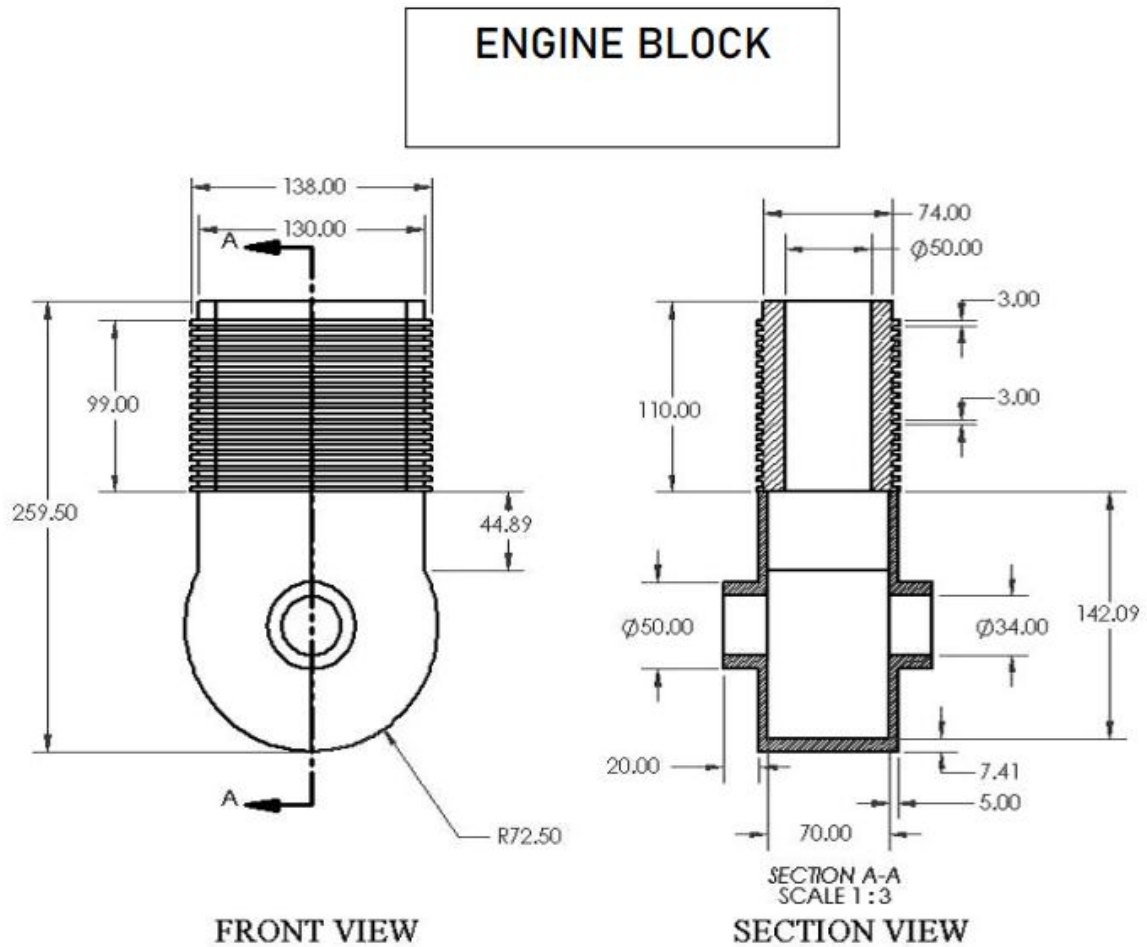


3. Modelling of crank shaft assembly.

CRANK SHAFT
ASSEMBLY



4. Modelling of cylinder block assembly (Single cylinder)



Allocation of Marks

Sl No	Description	Marks
1	Creation Part Modelling	25
2	Assembled Solid Modelling	25
3	Printout	10
4	Written test(Theory Portions only)	30
5	Viva Voce	10
Total		100